

REVISIONS			
REV.	DESCRIPTION	DATE	APPROVED
A	INITIAL RELEASE	4/27/15	BH

1. USING A 2.5MM BALL DRIVER REMOVE THE TWO SCREWS LABELED BY BALLOON 1.
2. SLOWLY LOOSEN THE SCREW LABELED BY BALOON 2 UNTIL THE TENSION IS REMOVED FROM THE SPRING.
3. REMOVE THE DRIVE MECHANISM MOUNT WITH THE PNEUMATIC PUSH FITTING.
4. INSTALL THE NEW DRIVE MECHANISM MOUNT WITH THE EMBEDDED PUSH FITTING IN THE SAME ORIENTATION AS THE ONE YOU PREVIOUSLY REMOVED.
5. INSTALL THE SCREW LABELED BY BALOON 3 FIRST THEN PLACE THE SPRING INTO IT'S DESIGNATED PADS.
6. SLOWLY ROTATE THE MOUNT UNTIL YOU CAN INSTALL THE SCREW CLOSEST TO THE SPRING LABELED BY BALOON 4.
7. LOCTITE 222 CAN BE USED ON THESE SCREWS TO ASSIST IN LOCKING THE SCREWS IN BUT IS NOT REQUIRED.
8. INSTALL THE BOWDEN TUBE UNTIL IT PROTRUDES THROUGH THE ENTIRE MOUNT (DETAIL 'A')AND COMES INTO CONTACT WITH THE DRIVE GEAR BEARING (LABELED BY BALOON 5).

D

D

C

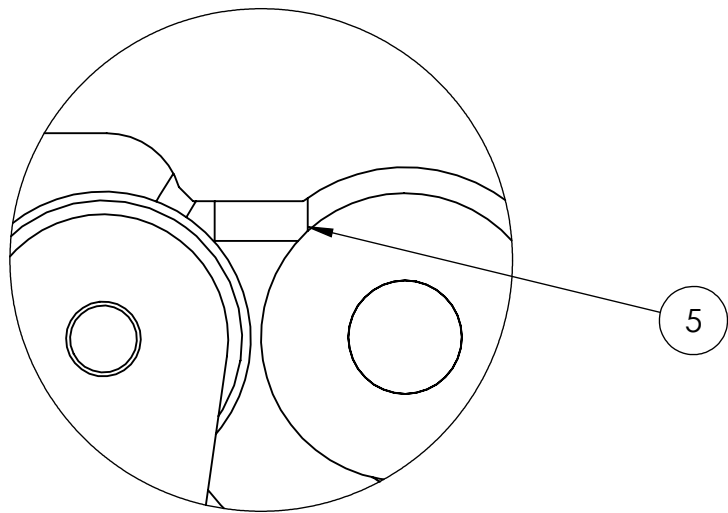
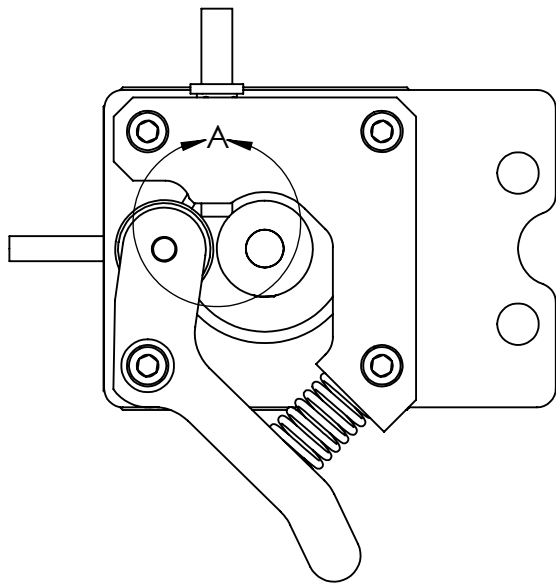
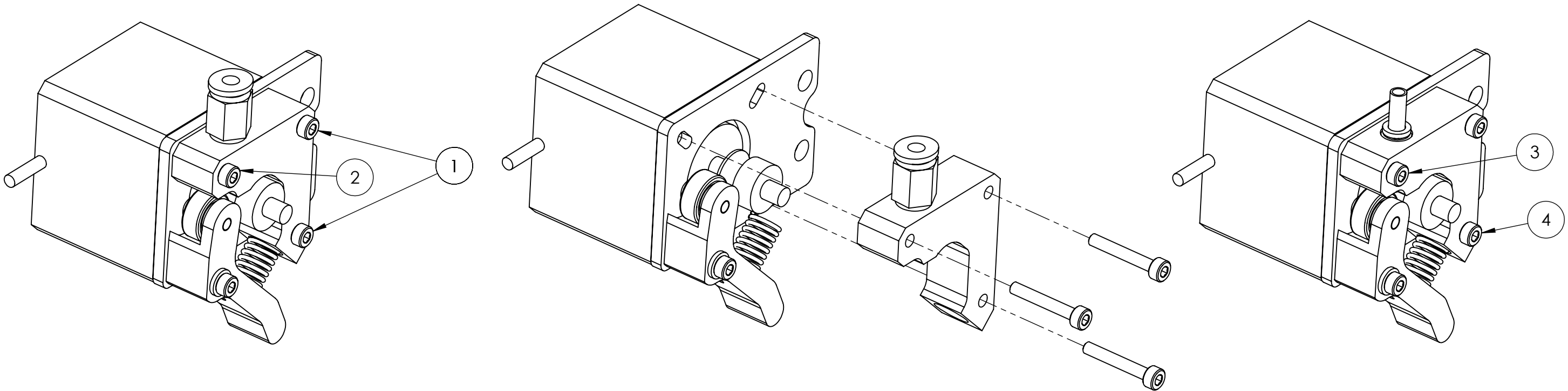
C

B

B

A

A



DETAIL A
SCALE 3 : 1

CONFIGURATION	DESCRIPTION
-009	ASSY, EXTRUDER MOUNT INSTALL

CC

BY

NC

SA

This work is licensed under a Creative Commons Attribution-NonCommercial-ShareAlike 4.0 International License.

UNLESS OTHERWISE SPECIFIED:		NAME	DATE	DELTA MAKER		
DIMENSIONS ARE IN INCHES		DRAWN	SPD			TITLE: ASSY - EXTRUDER MOUNT INSTALL
TOLERANCES:		CHECKED				
FRACTIONAL ±		ENG APPR.				
ANGULAR: MACH ±1.0° BEND ±		MFG APPR.				
TWO PLACE DECIMAL ± .030		Q.A.		TITLE: ASSY - EXTRUDER MOUNT INSTALL		
THREE PLACE DECIMAL ± .010		COMMENTS:				
INTERPRET GEOMETRIC TOLERANCING ANSI Y14.5						
MATERIAL SEE NOTES						
FINISH SEE NOTES						
DO NOT SCALE DRAWING		SIZE				DWG. NO.
		B		DM1-1006	A	
		SCALE: 1:1		WEIGHT:	SHEET 1 OF 1	